



A **WATTS** Brand
TEL: 800.BRADLEY
FAX: 262.251.5817
bradleycorp.com

Patient Care List Price Book 041525PCP

Effective Date: April 15, 2025

Table of Contents

TDWL22 Terreon Deep Well Lav	3
7920 Series Dialysis Box	4
HSL1 - Ligature Resistant Single Station Lavatory	5
HSR10 - Ligature Resistant TMV and HD Valves	6
HSC95 - Ligature Resistant Front Mount Wall Shower	7
HSC91 - Ligature Resistant Front Mount Wall Shower	8
HSC79 - Ligature Resistant FV Cover with Hydraulic Flush Valve	9



PRICES

This price list applies from its effective date and all prior corresponding price lists are canceled. Prices are subject to change without notice. Items may be changed or discontinued without notice and without incurring obligation. For job quotations, please contact your Bradley Sales Representative in your area.

CREDIT TERMS

Open Account Terms are Net 30 days from date of invoice. Past due accounts may be subject to a service charge. Settlement of past due invoices may be required before additional shipments will be made. Cash in advance may be required when open accounts are not approved. Credit Department Phone 1-800-BRADLEY, FAX (262) 251-7747.

MINIMUM ORDERS

Orders under \$100.00 Net will incur a \$15.00 service charge.

**RETURN MERCHANDISE
AUTHORIZATION AND
CANCELLATIONS**

Bradley shall provide Return Materials Authorization (RMA) to original purchaser for all authorized returns. It shall be the responsibility of the original purchaser to obtain written RMA authorization to return merchandise for credit. Materials must be in the original packaging and in resaleable as new condition. Items returned without RMA information provided will be refused and returned for delivery back to sender at sender's expense freight collect. A minimum of 25% handling and restocking charge (or \$50.00, whichever is greater) is required on all returns. Standard fixtures will be considered for return. Other custom-fabricated modified fixtures and special fixture items will not be considered for return, and are non-cancelable when entered by Bradley.

Please refer to our policy at <http://www.bradleycorp.com/customerservice/rma> for details.

SHIPMENTS AND CLAIMS

Transit damage should be noted on the freight bill before signing for receipt of material. Bradley should be notified by FAX immediately. Bradley will then file the claim with the contracted carrier as a service to the customer.

Claims for shipment shortages must be FAXed within two (2) weeks of invoice date to Bradley with documentation and are subject to factory verification.

TECHNICAL ASSISTANCE

Your Bradley Sales Representative can provide technical or promotional information on Bradley Products. They are specialists in the field.

FREIGHT CLASSIFICATION

Washfountains 77-1/2	Emergency Fixtures 70
Showers 70	Patient Care 92-1/2

WARRANTY

Product warranties may be found under "Product Information" on our website at www.bradleycorp.com



A WATTS Brand

TEL: 1-800-BRADLEY FAX: 262-251-5817
Web Site: www.bradleycorp.com

List Price

Effective Date: April 15, 2025

TDWL22

MODEL			
Model	Description	Ship Wt. (lbs)	Price
TDWL22	Terreon Deep Well Lavatory	130	\$2,334.00

STANDARD SELECTIONS

Faucet Type			Price
SHANK	Centershank		N/C
4" SET	4" Centerset		N/C
8" SET	8" Centerset		N/C

Order S53-325, S53-326/27, or S53-315 faucets as separate line item

Soap Dispenser Type			Price
6315-KT0000	Battery IR Metering Soap Dispenser Kit ** (w/ Batteries and 1,000- shot soap) Order 6315 transformer as separate line item		\$239.00
6324	16oz. Plastic Globe, 4" Spout **		\$54.00
6324-68	32oz. Plastic Globe, 4" Spout **		\$54.00
6334	16oz. Plastic Globe 3-1/2" Spout **		\$155.00
SDO	1-1/4" Soap Drilling Only **		N/C
NSD	No Soap Dispenser		N/C

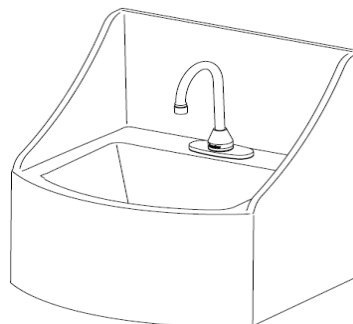
Water Supply Type			Price
TMA	Navigator ® Thermostatic Mixing Valve (Hot and Cold Stops and Supplies)		\$111.00
TL	Single Tempered Line (Stop and Hose)		\$39.00
NONE	No Water Supply Type (Customer Supplied Stops and Supplies)		N/C

Bowl Color			Price
WHT-SAND	White Sand		N/C

Mounting Type			Price
BRKT	Surface-Mounted Bracket		\$320.00
NONE	Customer-Supplied Mounting		N/C

Waste Assembly Type			Price
S-CHROME	Single Chrome-Plated P-Trap		\$49.00
P-TRAP-P	Single Polypropylene P-trap		\$5.00
NONE	No P-trap (Customer Supplied P-Trap)		N/C

Drain Assembly Type			Price
D-ASSY	Drain Assembly		\$49.00
NONE	No Drain Assembly		N/C



OPTIONAL SELECTIONS

Soap Adapter Type		Price
P19-231F	Plug-In Adapter for 6315 Soap Dispenser (must be ordered as separate line item)	\$107.00

**Soap is not available with 8" trim plates or wrist blade handle type faucets

Prices subject to change without notice.
Items may be changed or discontinued
without notice and without incurring obligation.



A WATTS Brand

List Price

Effective Date: April 15, 2025

7920 Series Dialysis Boxes

Sample: 7920-STD-DR-CL-SS-2

MODEL		
Model	Description	Price
7920	Series Dialysis Box	\$1,887.00
STANDARD SELECTIONS		
Wall Thickness Type		Price
STD	Wall Thickness of 5/8", 1/2", or 3/4"	N/C
CUS	Custom Wall Thickness	\$201.00
Door Type		Price
DR	With Door	\$92.00
N-DR	No Door	N/C
Lock Type		Price
CL	Cylinder Lock with Key	\$19.00
TTC	Thumb Turn Cam Lock (No Key)	\$19.00
NL	No Lock (automatically selected if N-DR option is selected above)	N/C
Valve Type		Price
PV-1	PVC (polyvinyl chloride) - 1 Valve Supply	\$60.00
PV-2	PVC (polyvinyl chloride) - 2 Valve Supply	\$121.00
BR-1	Brass - 1 Valve Supply	\$128.00
BR-2	Brass - 2 Valve Supply	\$256.00
SSV-1	Stainless Steel - 1 Valve Supply	\$41.00
SSV-2	Stainless Steel - 2 Valve Supply	\$82.00
NV	No Valve Option (brackets, punching, fittings and valve(s) provided by others)	N/C

OPTIONAL SELECTIONS		
Supply Adapter Type		Price
(multiply list price by 2 if PV-2, BR-2, or SSV-2 is selected)		
A-PV	3/4" NPT x 1/2" NPT Adapter Bushing (for use with PVC)	\$8.00
A-BR	3/4" NPT x 1/2" NPT Adapter Bushing (for use with brass)	\$8.00
A-SSV	3/4" NPT x 1/2" NPT Adapter Bushing (for use with stainless steel)	\$8.00
NONE	No Supply Adapter	N/C



A WATTS Brand

TEL: 1-800-BRADLEY FAX: 262-251-5817
Web Site: www.bradleycorp.com

List Price

Effective Date: April 15, 2025

HSL1

SafeCare™ Single Station Lavatory



MODELS

Model	Description	Ship Wt. (lbs)	Price
HSL1	Single Station Lavatory (select sprayhead from options below)	86	\$1,334.00

STANDARD SELECTIONS

Activation Type (Select One):		Price
IRP	Infrared	\$725.00
BIR3	Battery Infrared	\$913.00
TTPA	TouchTime Pushbutton	\$1,150.00
TTPB	TouchTime Piezo Switch	\$1,378.00
Water Supply Type (Select One):		Price
TMA	Navigator® Thermostatic Mixing Assembly (Hot & Cold Supplies)	N/C
TL	Single-Tempered Line	N/C
Color of Terreon Bowl/Sprayhead Cover (Select One):		Price
Standard Colors		
CHAR	Charcoal Gray	N/C
DRIFT	Driftwood	N/C
E-GRAY	Empire Gray	N/C
GRAPH	Graphite	N/C
LANNON	Lannonstone	N/C
MOONSTONE	Moonstone	N/C
PEBBLE	Pebble Beach	N/C
PEP-WHT	Peppered White	N/C
RIVER	Riverstone	N/C
SAND	Sandtrap	N/C
S-CREEK	Stone Creek	N/C
S-MIST	Silver Mist	N/C
WHT-SAND	White Sand	N/C

OPTIONAL SELECTIONS

Access Panel Type (Select One):		Price
STEEL	Lig. Resistant Stainless Steel Access Panel	\$655.00
COAL	Coal High Impact Polymer* (*Only available with BRKT mounting option)	\$339.00
Mounting Type:		Price
BRKT	Surface-Mounted Bracket	\$339.00
NONE	Customer Supplied Mounting	N/C
Waste Assembly Type:		Price
S-POLY	Single Polypropylene P-Trap	N/C
S-CHROME	Single Chrome-Plated P-Trap	\$49.00

Prices subject to change without notice.
Items may be changed or discontinued
without notice and without incurring obligation.



A WATTS Brand

TEL: 1-800-BRADLEY FAX: 262-251-5817
Web Site: www.bradleycorp.com

List Price

Effective Date: April 15, 2025

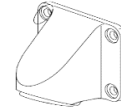
HSR10

SafeCare™ Shower with Concealed Supplies

Sample: HSR10-HDSR-AS

MODELS

Models	Description	Ship Wt. (lbs)
HSR10	Ligature Resistant In-Wall Shower	25



***For a complete HSR10 unit, please include the HDSR list price and the AS list price shown below.**



STANDARD SELECTIONS

Select one of each to quote an HSR10:		List Price
Valve Type:		
HDSR *	Equa-Flo HD Pressure Balancing Valve W/ Ligature Resistant Control (S59-1005SR)	\$749.00
NONE	No Valve	N/C
Showerhead Type:		
AS*	2.0 GPM Ligature Resistant Showerhead (S24-210)	\$505.00
NONE	No Showerhead	N/C

HSR10-HDSR-AS Shown



A WATTS Brand

TEL: 1-800-BRADLEY FAX: 262-251-5817
Web Site: www.bradleycorp.com

List Price

Effective Date: April 15, 2025

HSC95

SafeCare™ Front-Mounted Panel Shower

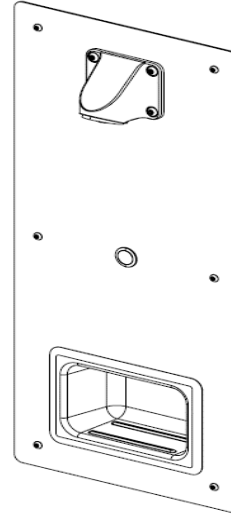
MODELS

Model #	Ship Wt. (lbs.)	Price
HSC95	15	\$979.00

STANDARD SELECTIONS

Valve Type:		Price
ASTM	Air Pushbutton	\$758.00
TTPA	TouchTime Pushbutton*	\$773.00
TTPB	TouchTime Piezo Switch*	\$926.00

*TTPA and TTPB valves require a low-voltage UL/CSA listed 120VAC/12VDC plug-in adapter





A WATTS Brand

List Price

Effective Date: April 15, 2025

HSC91

SafeCare™ Front-Mounted Two Head Panel Shower

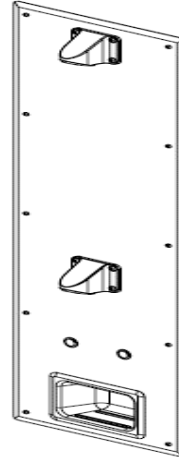
MODELS

Model #	Ship Wt. (lbs.)	Price
HSC91	15	\$1,973.00

STANDARD SELECTIONS

Valve Type:	Price
ASTM Air Pushbutton	\$917.00
TTPA TouchTime Pushbutton*	\$1,038.00
TTPB TouchTime Piezo Switch*	\$1,247.00

*TTPA and TTPB valves require a low-voltage UL/CSA listed 120VAC/12VDC plug-in adapter





A WATTS Brand

TEL: 1-800-BRADLEY FAX: 262-251-5817
Web Site: www.bradleycorp.com

List Price

Effective Date: April 15, 2025

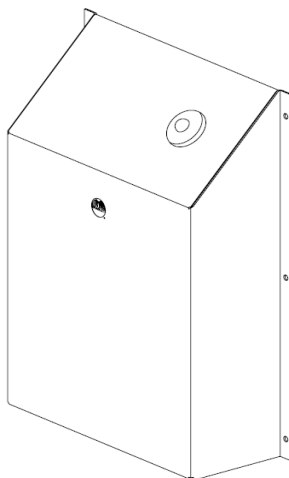
HSC79

SafeCare™ FV Cover with Hydraulic Flush Valve

Models

Model	Part Number	Description	Ship Wt (lbs)	List Price
HSC79	S91-061L*	Left Supply Flush Valve with Cover - Bead Blast Finish	21	\$994.00
HSC79	S91-061R*	Right Supply Flush Valve with Cover - Bead Blast Finish	21	\$994.00
HSC79	S91-062L*	Left Supply Flush Valve with Cover - #3 Satin Polish	21	\$1,284.00
HSC79	S91-062R*	Right Supply Flush Valve with Cover - #3 Satin Polish	21	\$1,284.00

* Hemispherical Push button standard



Change Log

Date	Page	Change Description	Implemented By
12/1/2020	All	2021 Price Increase	Cassie Schneider
8/1/2021	All	August 2021 Price Increase	Cassie Schneider
11/1/2022	All	January 2022 Price Increase	Cassie Schneider
1/28/2022	3	Accessories February 2022 Price Increase	Lane Valimont
3/14/2022	All	March 2022 Price Increase	Mary Scherer
2/20/2023	3,5	March 2023 Price Increase	Quinn Sapienza
3/31/2023	9	Terreon Color Removal	Quinn Sapienza
2/1/2024	All	February 2024 Price Increase	Quinn Sapienza
1/17/2024	All	Bradley Globe Logo Update	Quinn Sapienza
1/1/2024	All	January 2025 Price Increase	Quinn Sapienza
3/6/2025	All	April 2025 Price Increase	Quinn Sapienza

***Unless noted, all changes apply to both US and CDN price book pages**